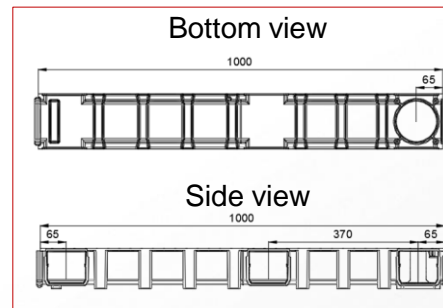
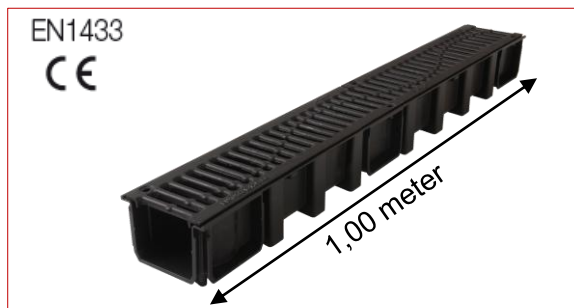
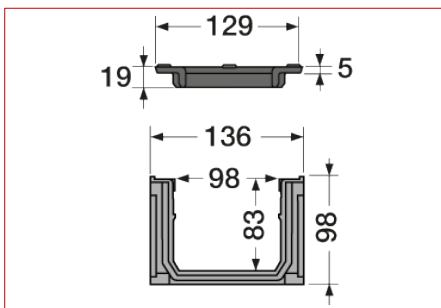


Connecto® I Channel – Outside width 130mm - with ductile iron slotted gratings class B125

Code : CAL10BF



FUNCTION :

The drainage channel is designed to drain run-off water. In accordance with EN1433 standard and the marking it can be used in footways, pedestrian areas, private car parks or car parking decks in class **B125**.

DESCRIPTION :

It consists of:

- an injected polypropylene body in black colour with male/female interlocking system
- two ductile iron slotted gratings class B125
- four black steel screws

ACCESSORIES :

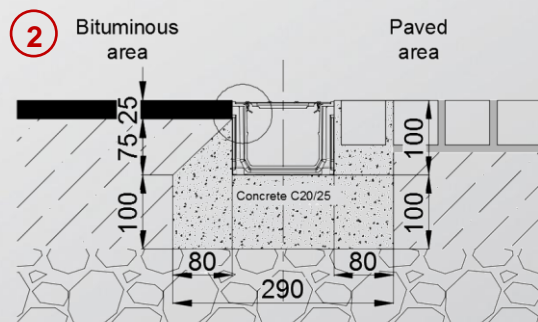
The network connection can be realized thanks to the following PVC accessories :

- end cap/end or lateral outlet Ø100 or 110 : NAT178 or NAV178
- vertical outlet Ø100 or 110 : STCAN or SVCAN
- sump unit with outlet Ø100 or 110 : PSCVT or PSCVV



CHARACTERISTICS :

- Resistance class: B125
- Effective width: 98 mm
- Effective depth: 83 mm
- Grating type: Ductile iron
- Drainage surface: 470 cm²/ml
- Hydraulic section: 81 cm²
- Opening dimensions: 10 / 70 mm
- Weight: 5,7 kg



IMPLEMENTATION :

1. The channel body makes it possible to carry out 90° angles by interlocking.
2. See the scheme opposite

QUALITY - ENVIRONMENT :



DATE : August 2015